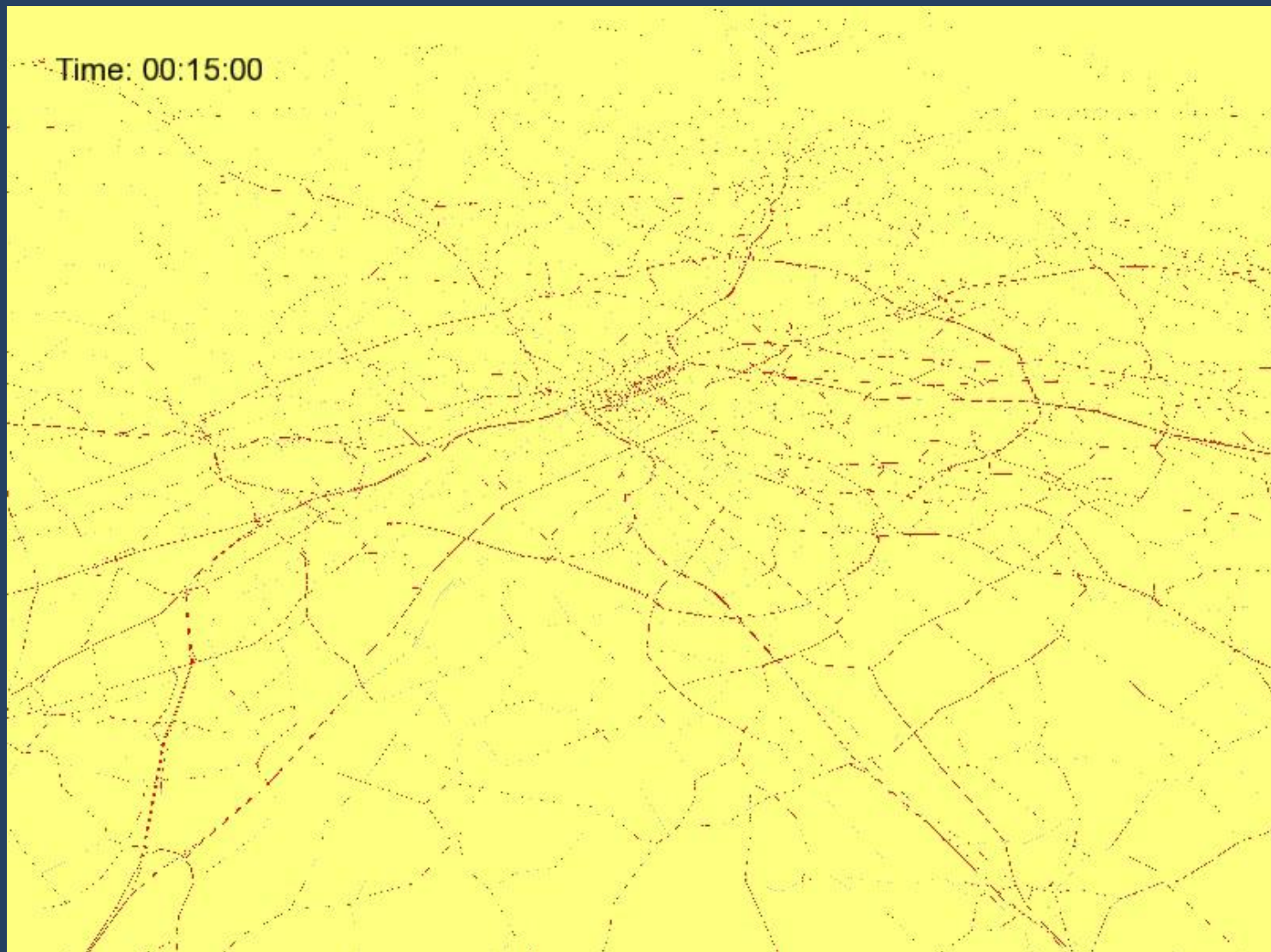


REGIONAL TRANSPORTATION REFERENDUM JULY 31, 2012





Transportation is the lifeblood of the region



EPA Fuel Economy Estimates

These estimates reflect new EPA methods beginning with 2008 models.

CITY MPG

30

Expected range
for most drivers
24 to 36 MPG

HIGHWAY MPG

38

Expected range
for most drivers
31 to 45 MPG

Estimated
Annual Fuel Cost

\$1,454

based on 15,000 miles
at \$3.20 per gallon

Combined Fuel Economy

This vehicle

33

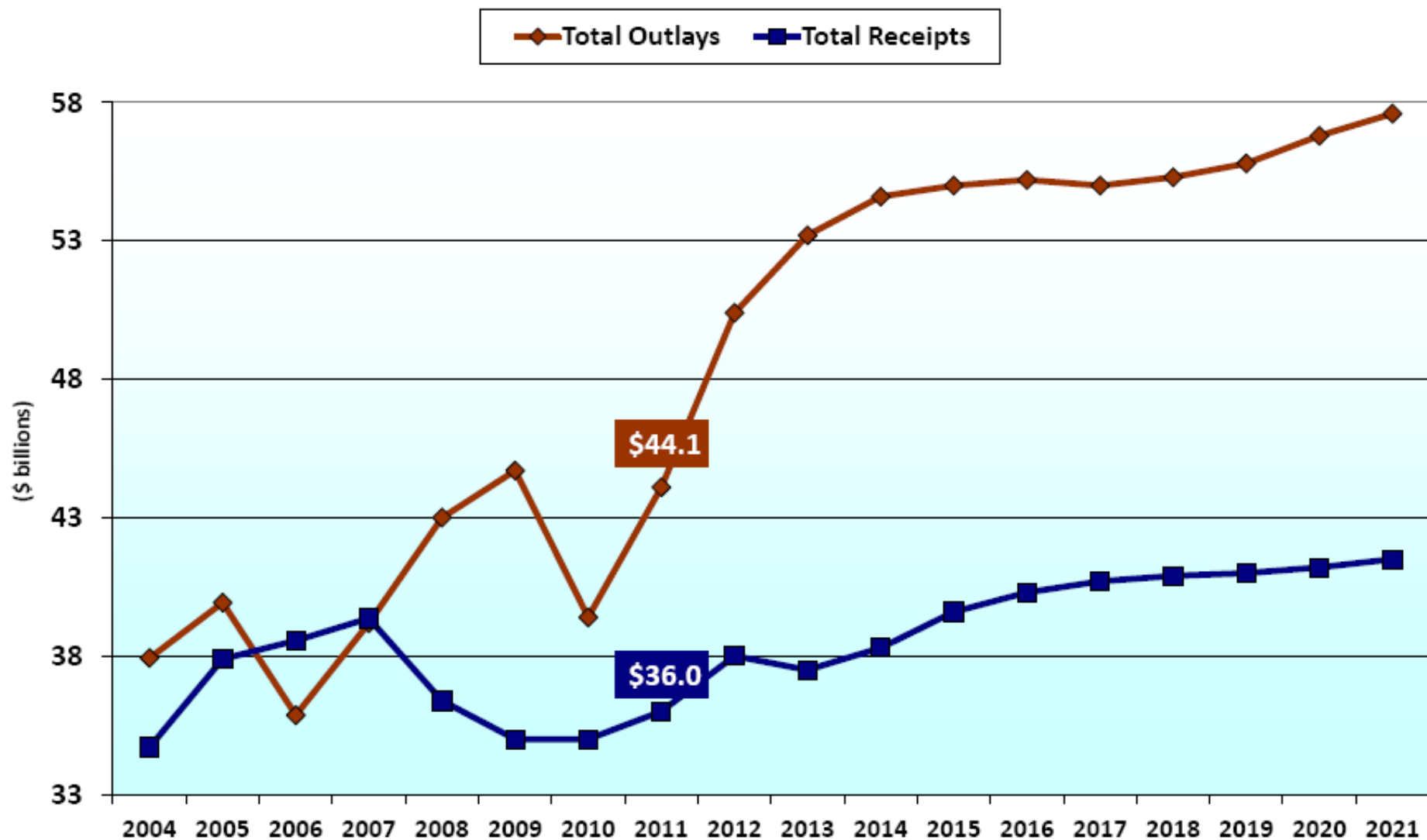
13 ————— 32

ALL MINICOMPACT CARS

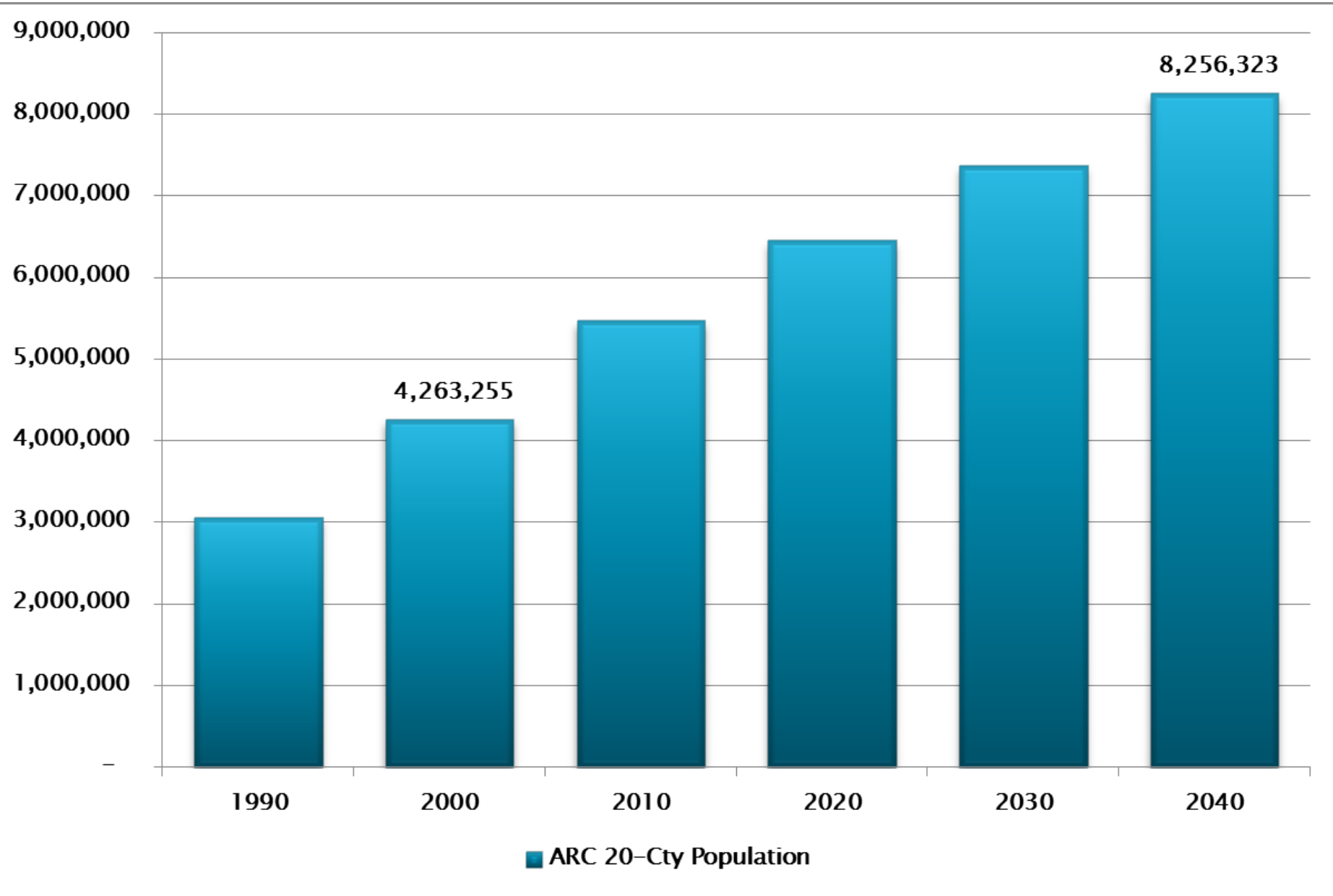
Your actual
mileage will vary
depending on how you
drive and maintain
your vehicle.

**Our vehicles are more efficient,
reducing gas tax revenue**

Federal Highway Trust Fund: Receipts and Outlays Discrepancy



Note: From Congressional Budget Office. Excludes \$8.017 billion transfer from General Fund to Highway Account of HTF in September 2008; \$7 billion transfer from General Fund to Highway Account of HTF in August 2009; \$19.5 billion transfer from General Fund to Highway and Mass Transit Accounts of HTF in March 2010.



9th worst congestion

48th in spending



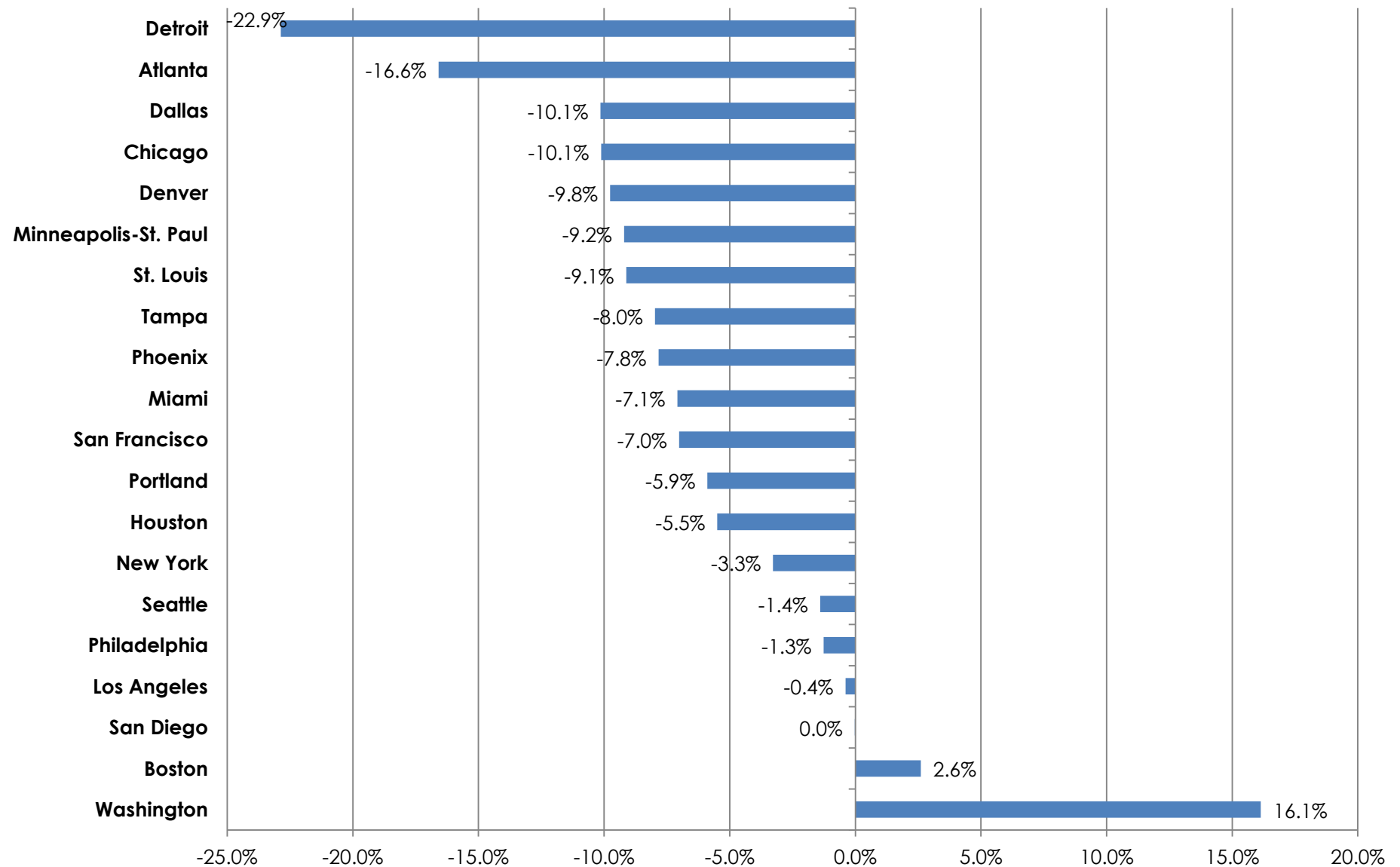


7 of the worst bottlenecks in U.S.

- #9 I-285 at I-85 (north)**
- #20 I-285 at I-75 / Windy Hill Road**
- #42 I-285 at I-20 (west)**



Percent Change in Inflation-Adjusted Median HH Income, 2000-2009





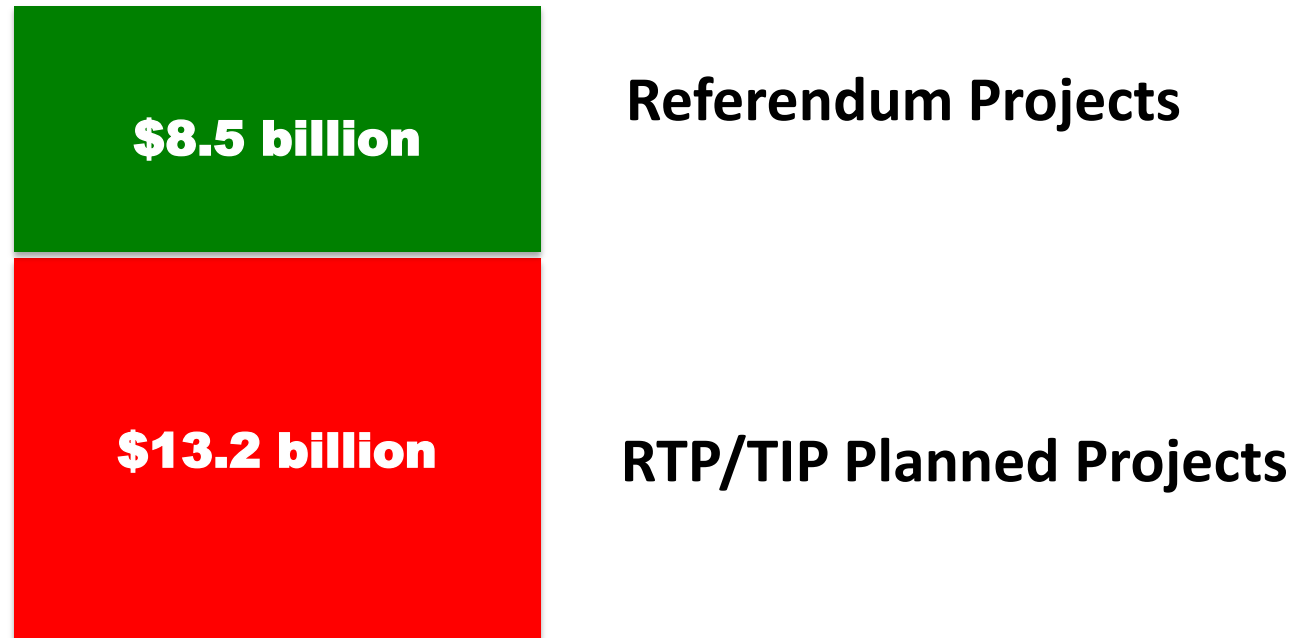
Transportation Investment Act

- 10 counties
- One cent sales tax for 10 years
- \$8.5 billion raised
 - 85% regional projects
 - 15% local projects
- 100% return



Referendum Accelerates Implementation

- **Transportation Funding 2013-2022**

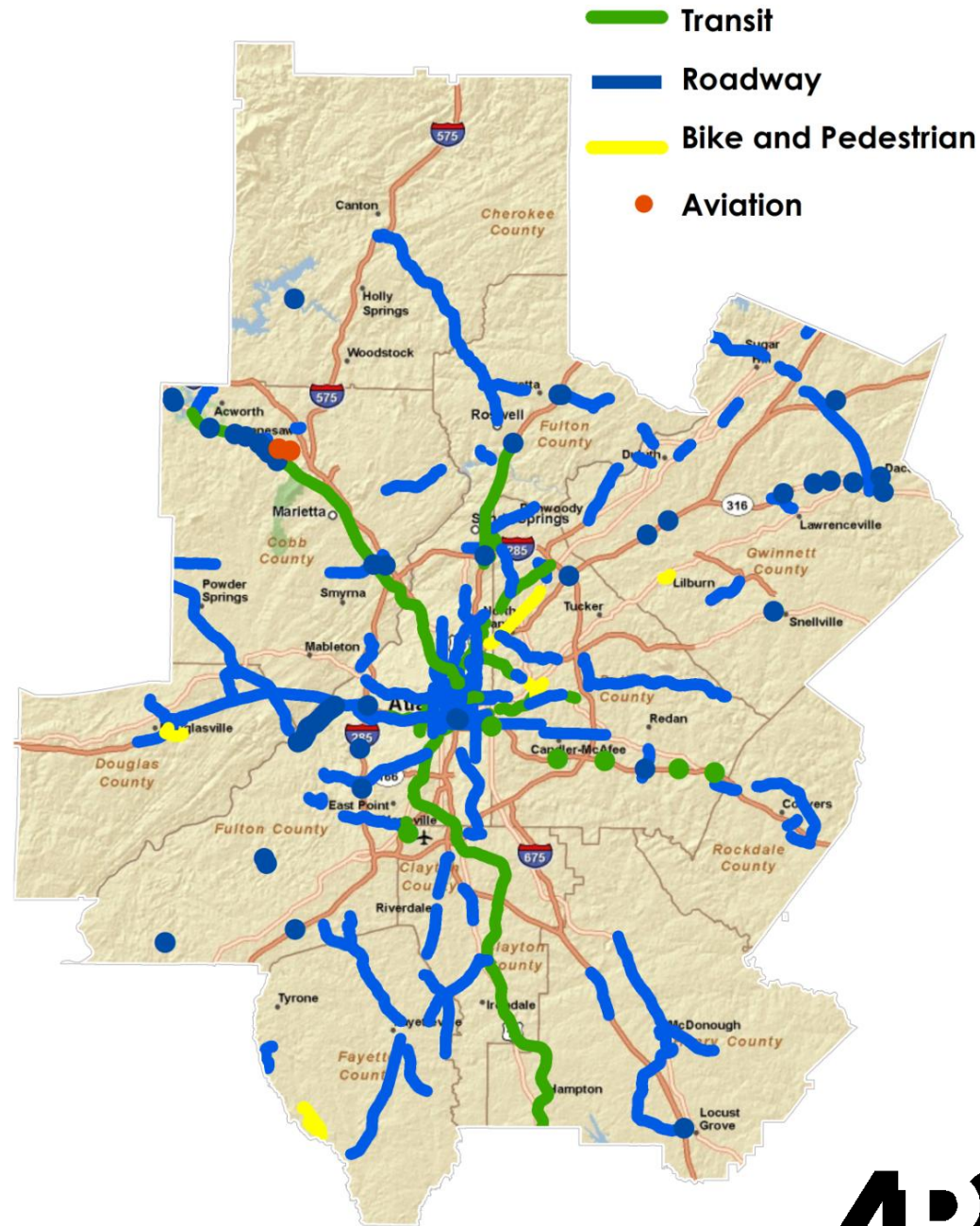


Total = \$21.7 billion

\$8.5 billion

\$7.2 billion for 157 projects

\$1.3 billion for additional local improvements



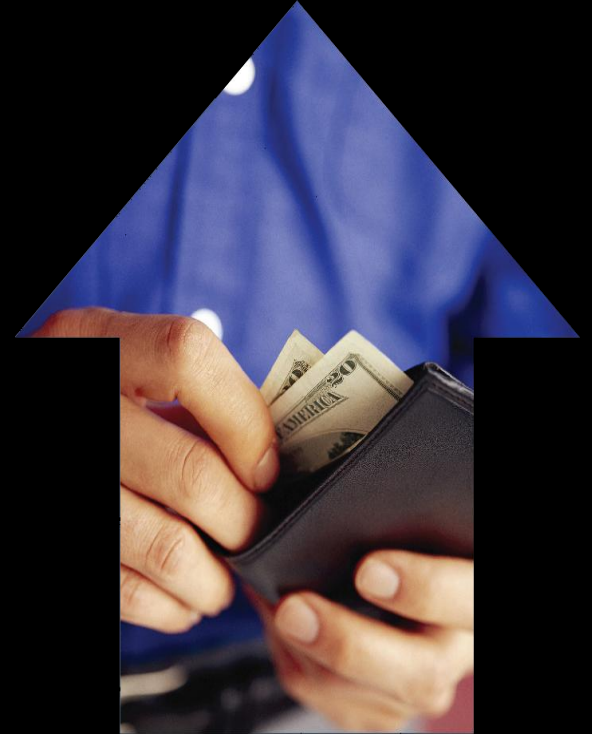
Economic Benefits



200,000 jobs
supported



\$34 billion
impact on
regional GDP

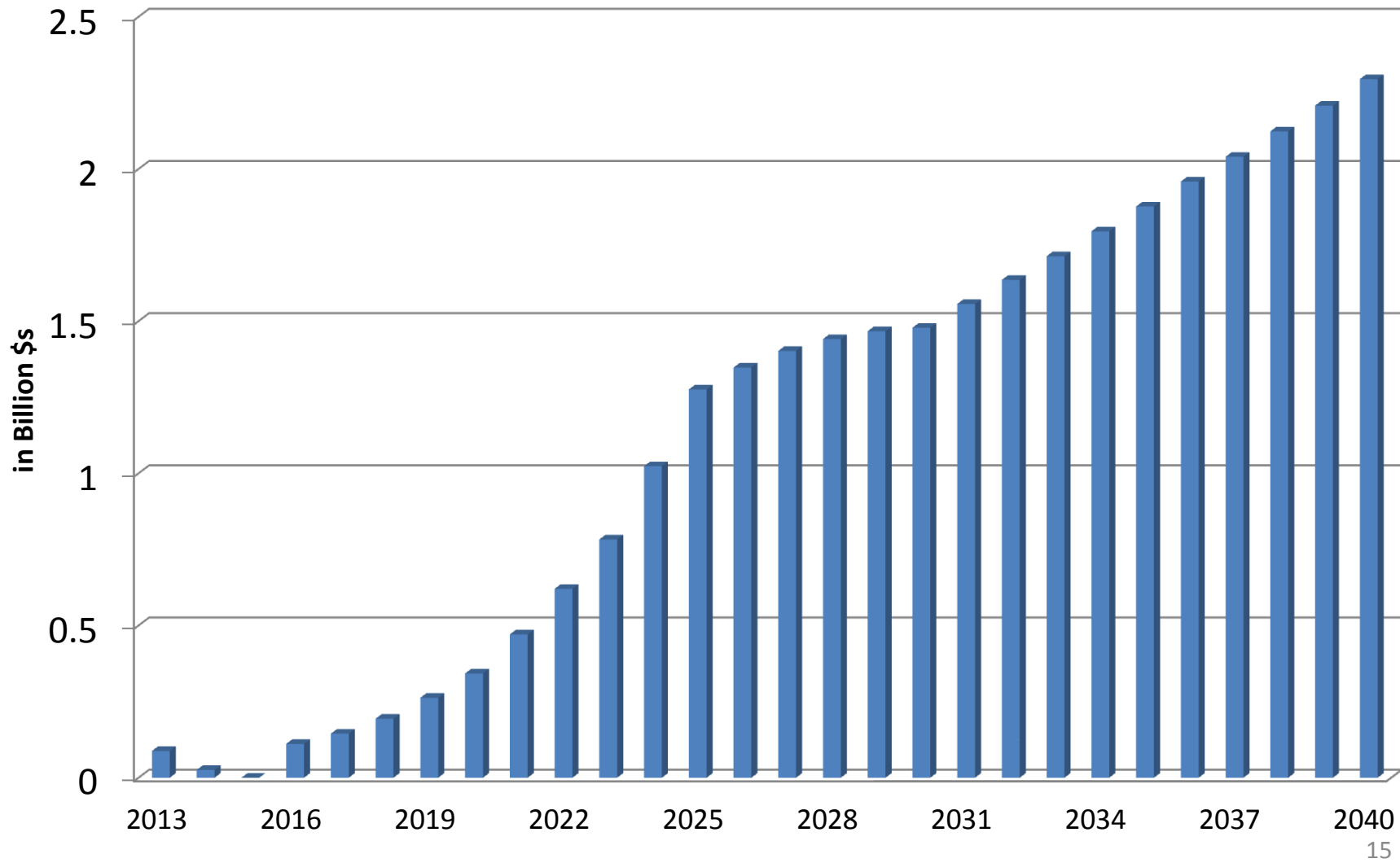


\$18 billion rise in
personal
income

\$34.75 Billion of Additional Gross Regional Product

Additional Above Adopted Plan 2040 Regional Forecasts (2016 to 2040) 2011\$

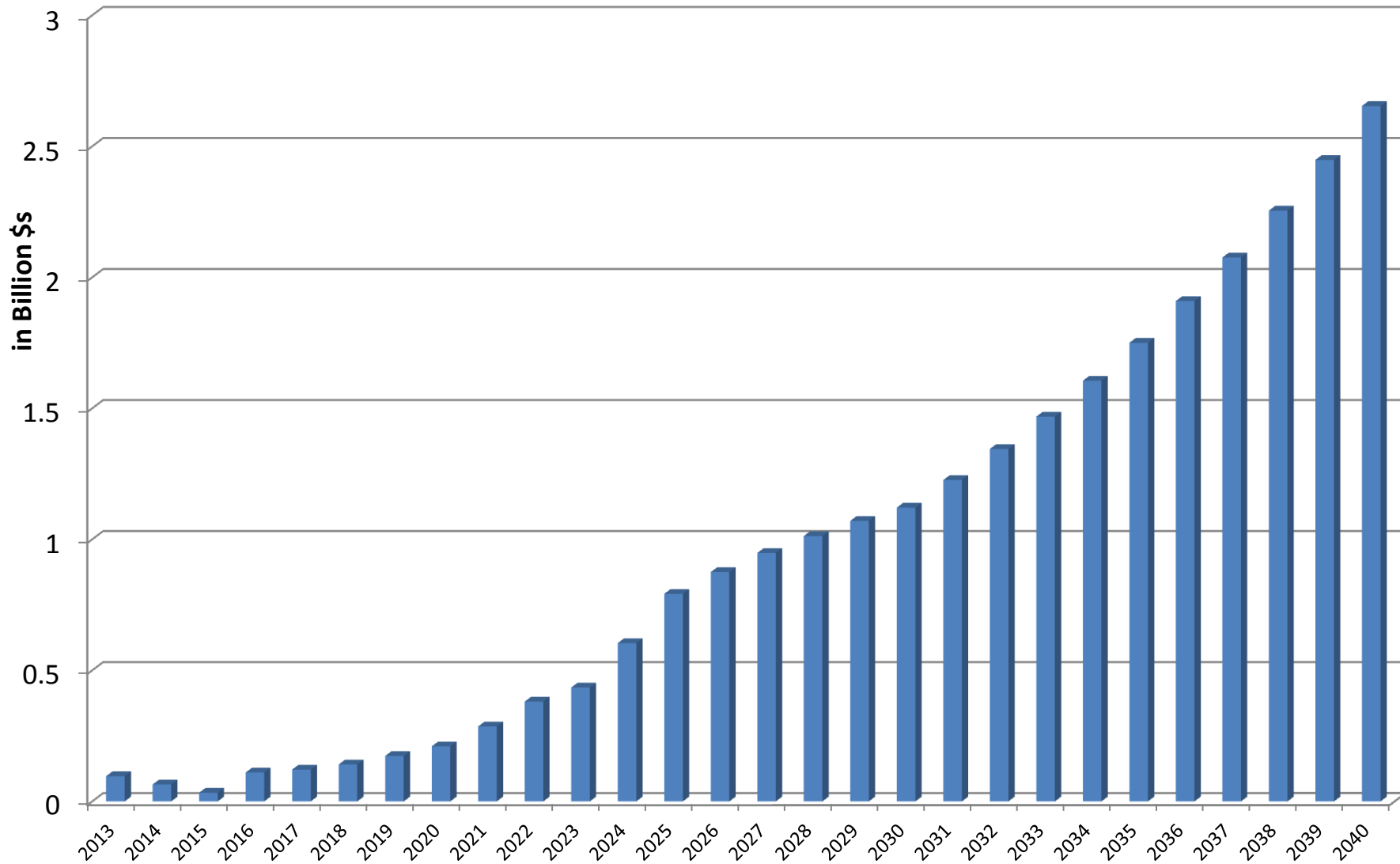
10 County



\$18 Billion (more) in Real Personal Income

Additional Above Adopted Plan 2040 Regional Forecasts (2016 to 2040) 2011\$

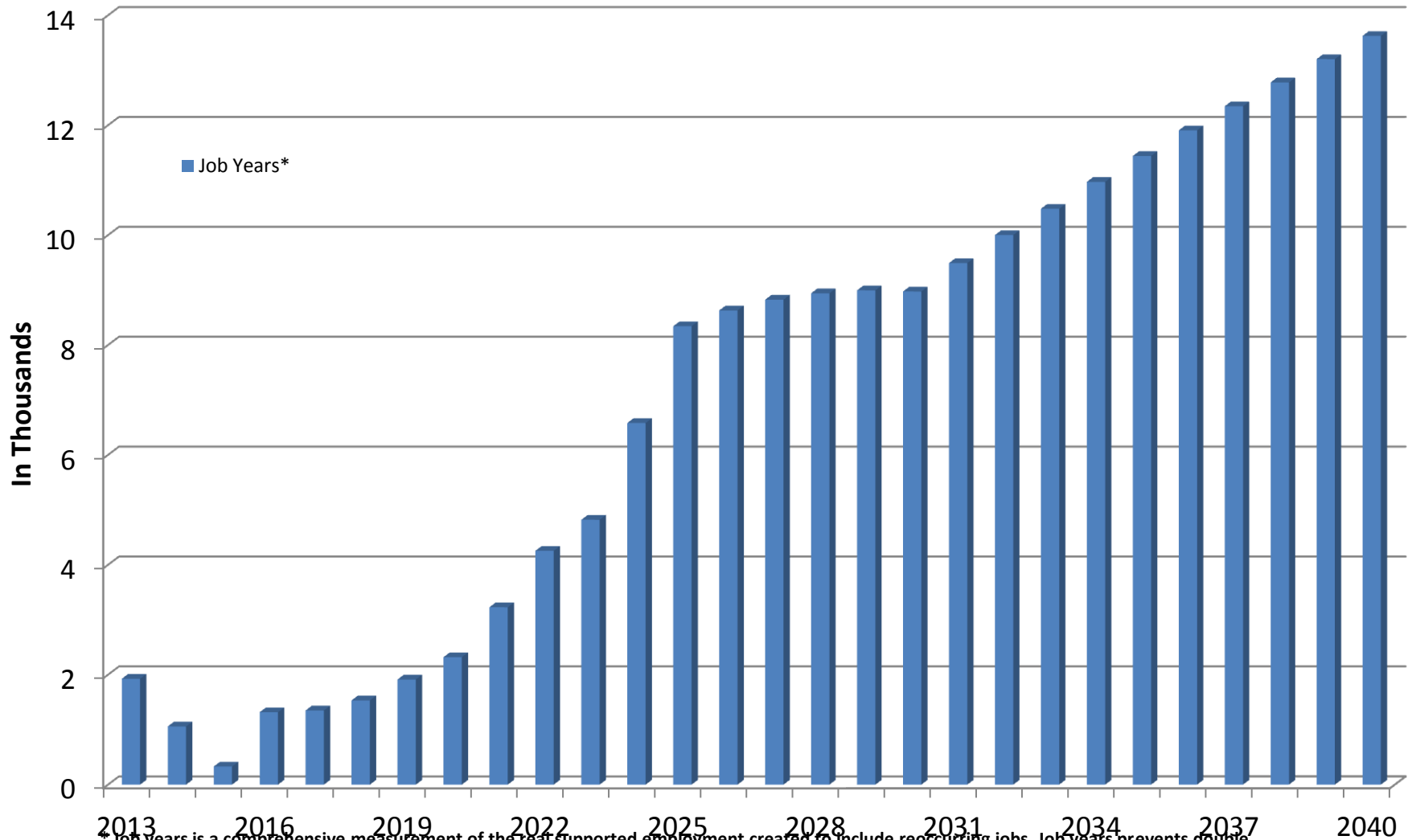
10 County



~200,000 More Supported Jobs (Job-Years)

Additional Above Adopted Plan 2040 Regional Forecasts (2013 to 2040)

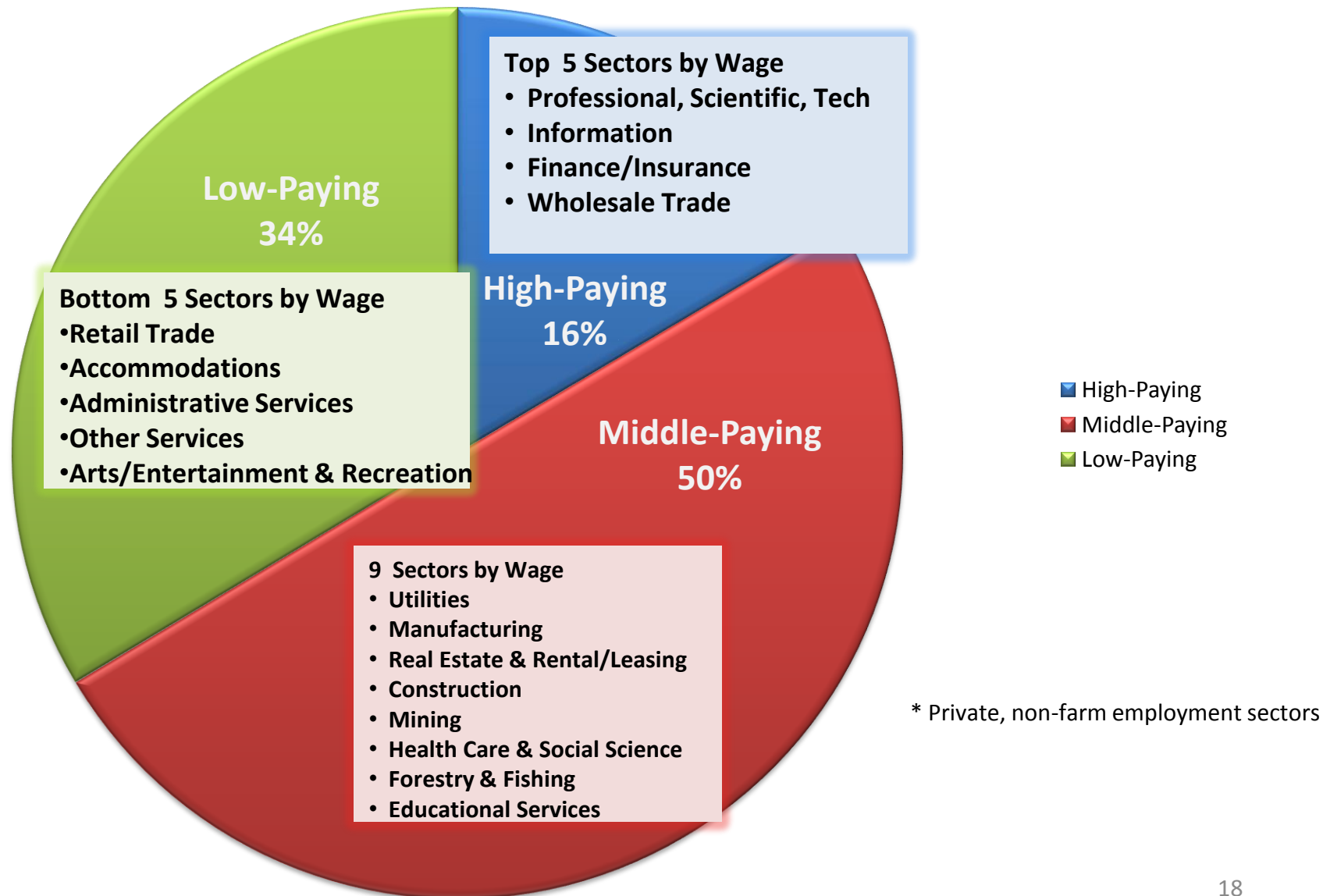
10 County



*Job years is a comprehensive measurement of the real supported employment created to include reoccurring jobs. Job years prevents double counting and accurately reflects the true economic value of the employment represented by the job.

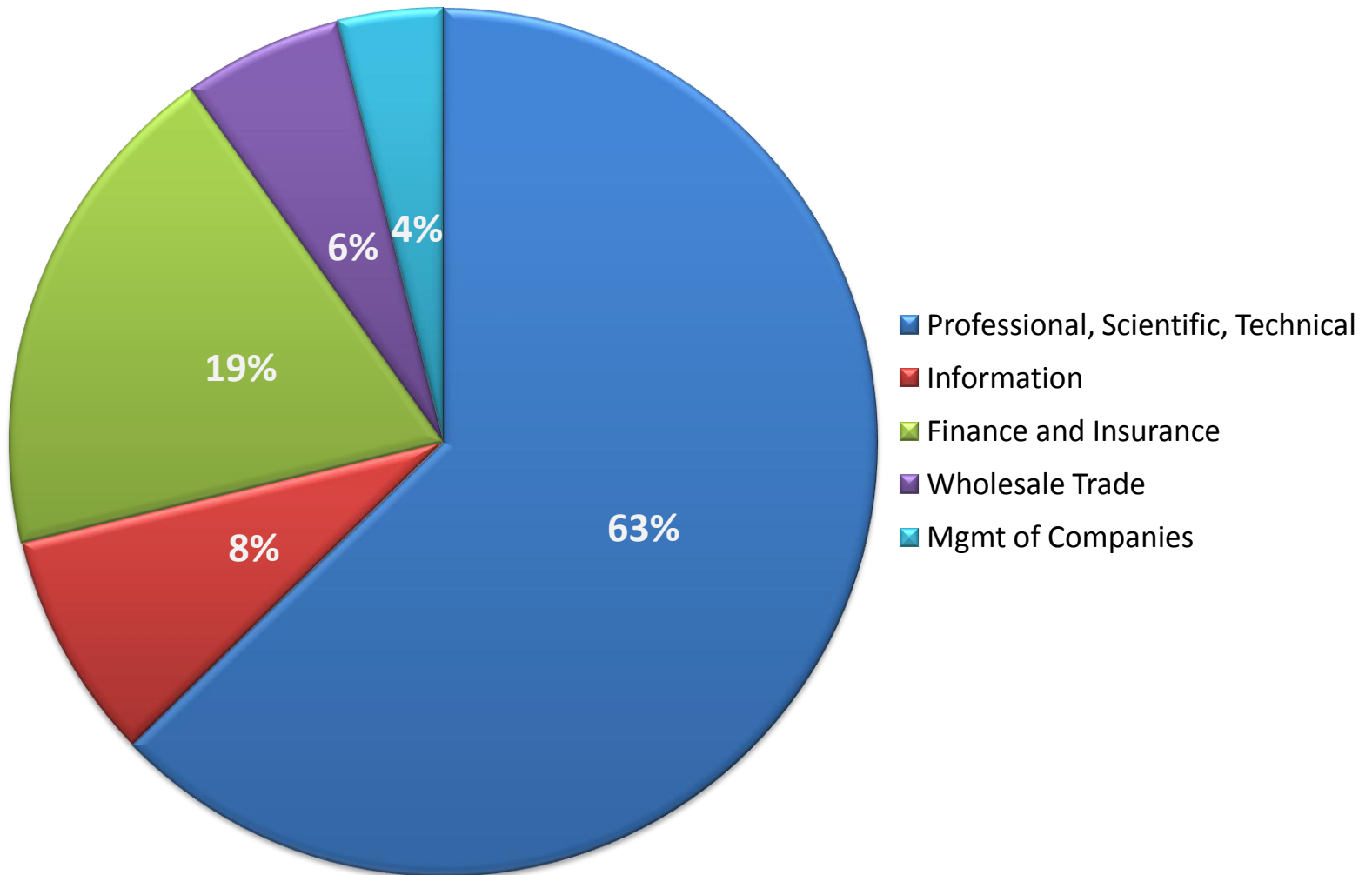
2/3 of Jobs High and Middle-Paying

Transportation Referendum-Generated Jobs: By Wage Category



2/3 of High-Paying in Highest Wage Sector

Industry Shares* of Transportation Referendum-Generated High-Paying Jobs



* Private, non-farm employment sectors

Over **\$9 billion** saved





1.2 million fewer pounds
of **tailpipe pollution** daily



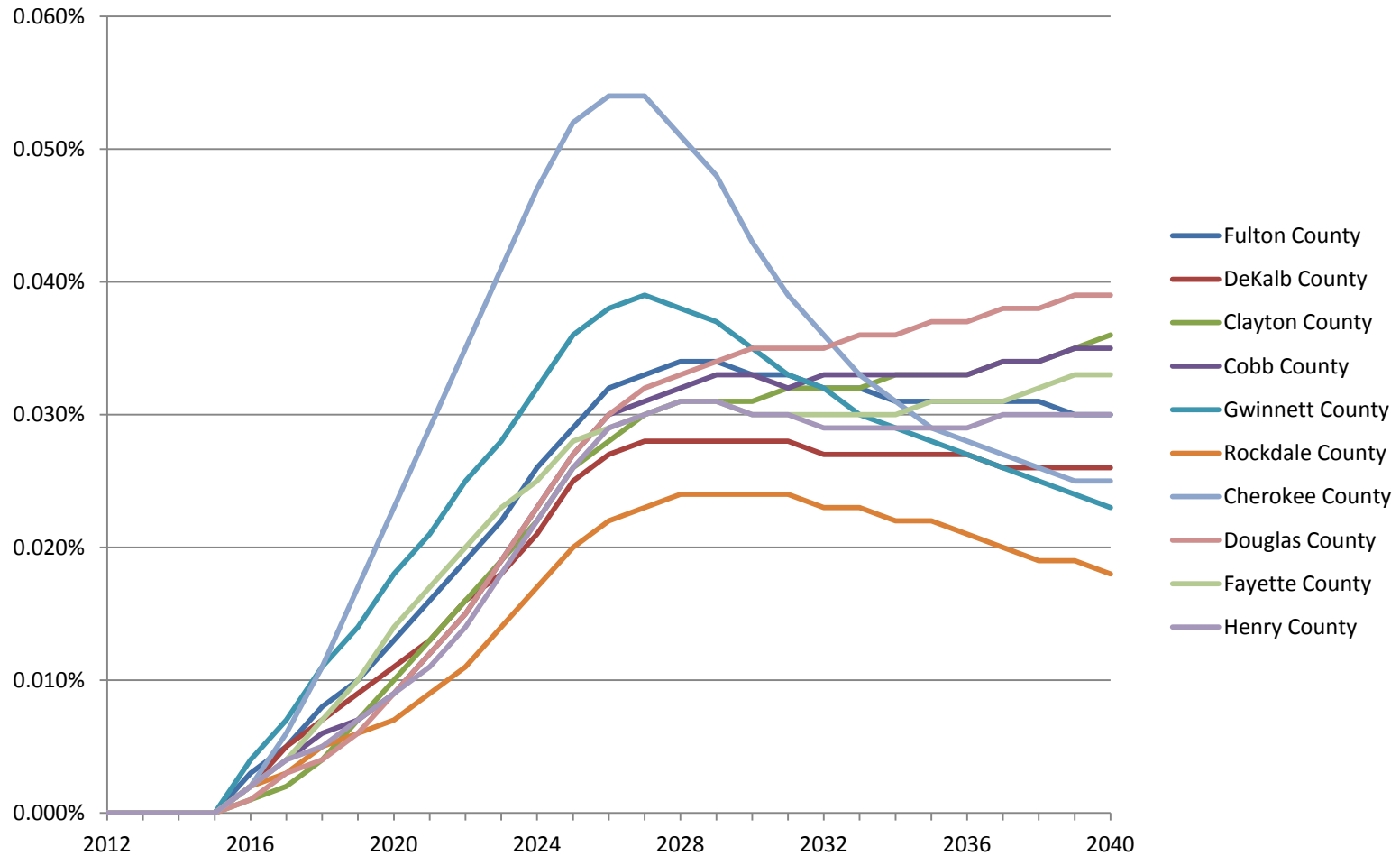


More efficient
roadways

ARC

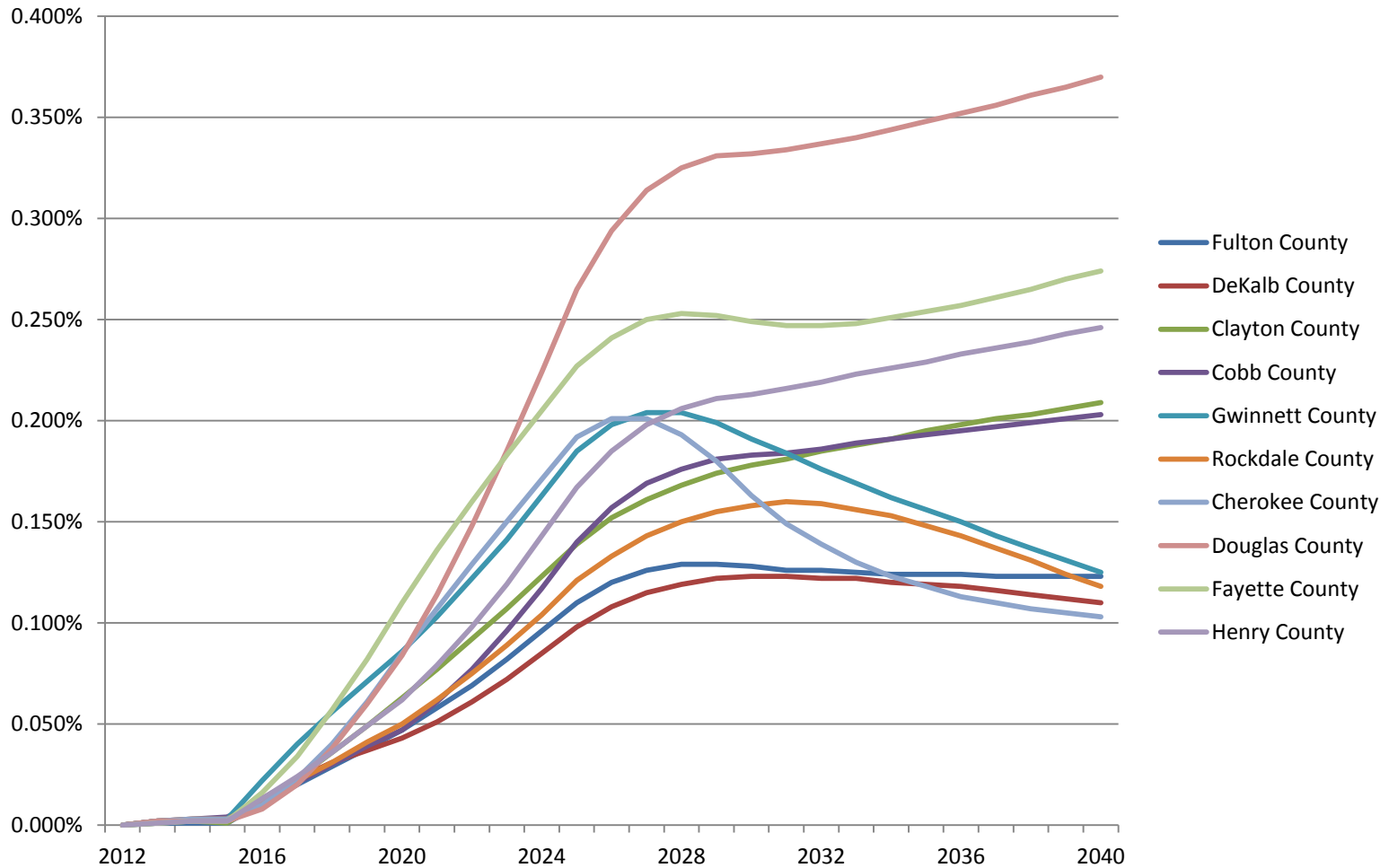
Making Business More Efficient

Commodity Access Index by County



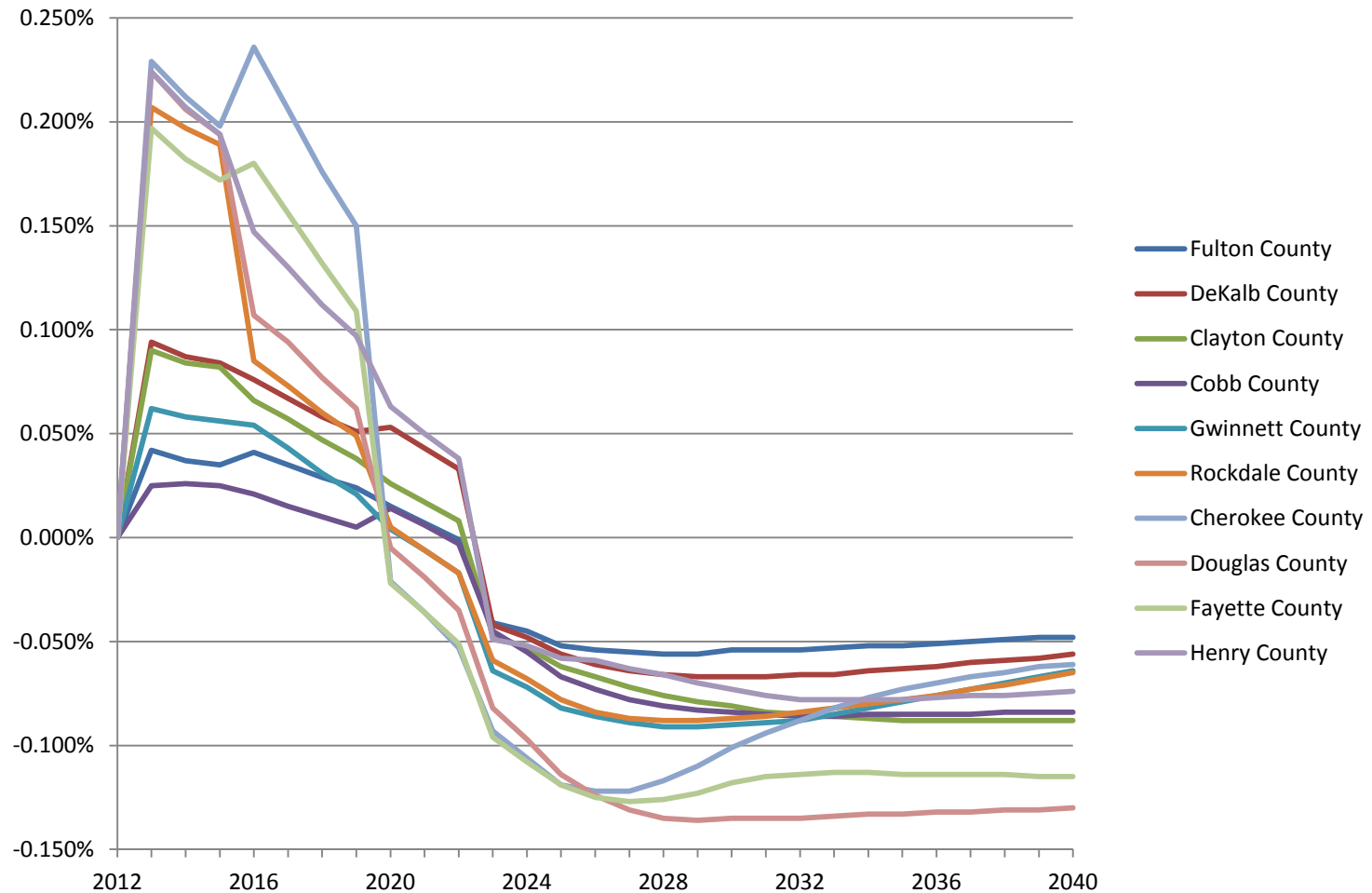
Making Business More Efficient

Labor Access Index by County



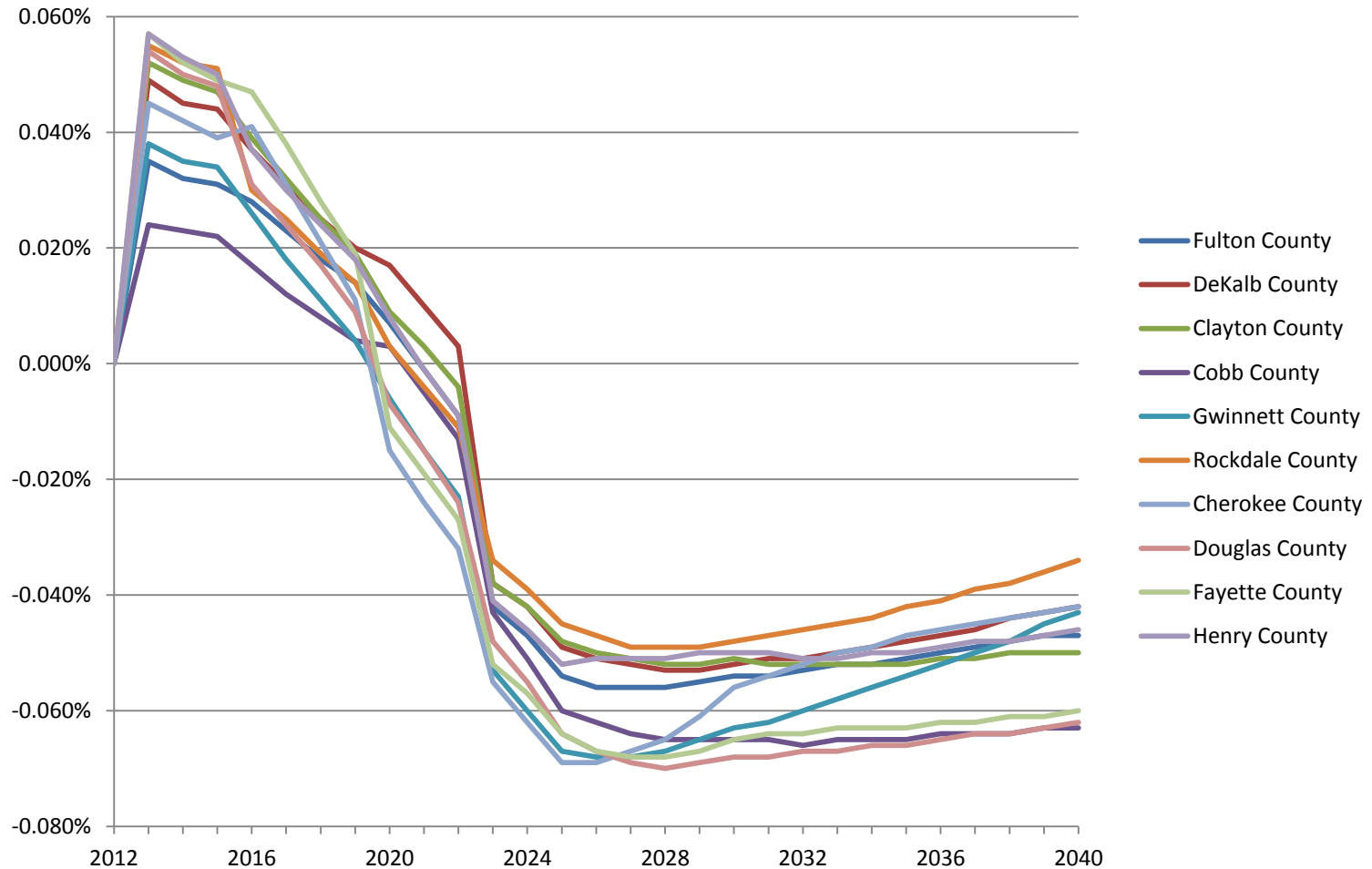
Making Business More Efficient

Relative Cost of Production by County



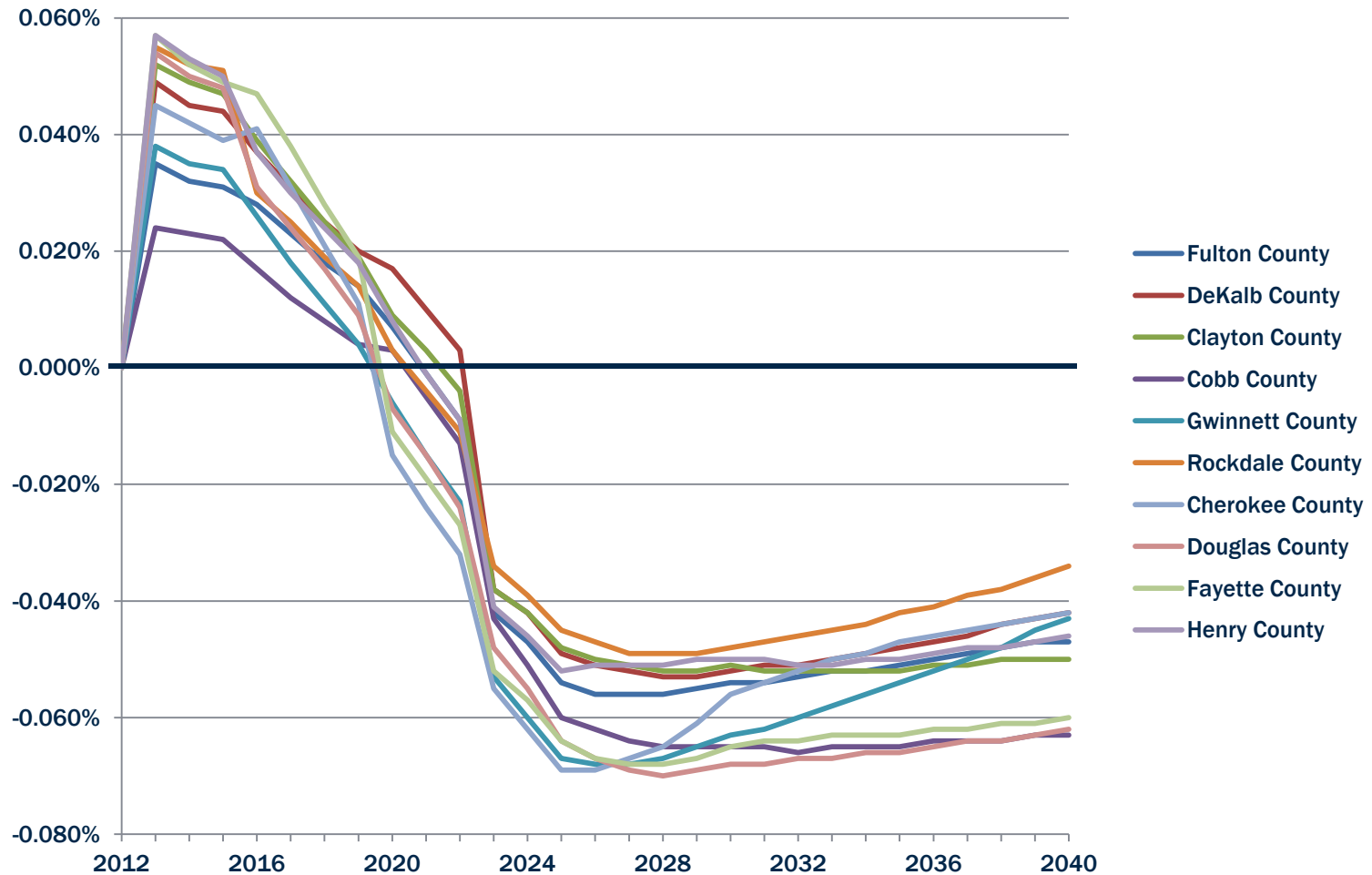
Making Business More Efficient

Relative Delivered Price by County

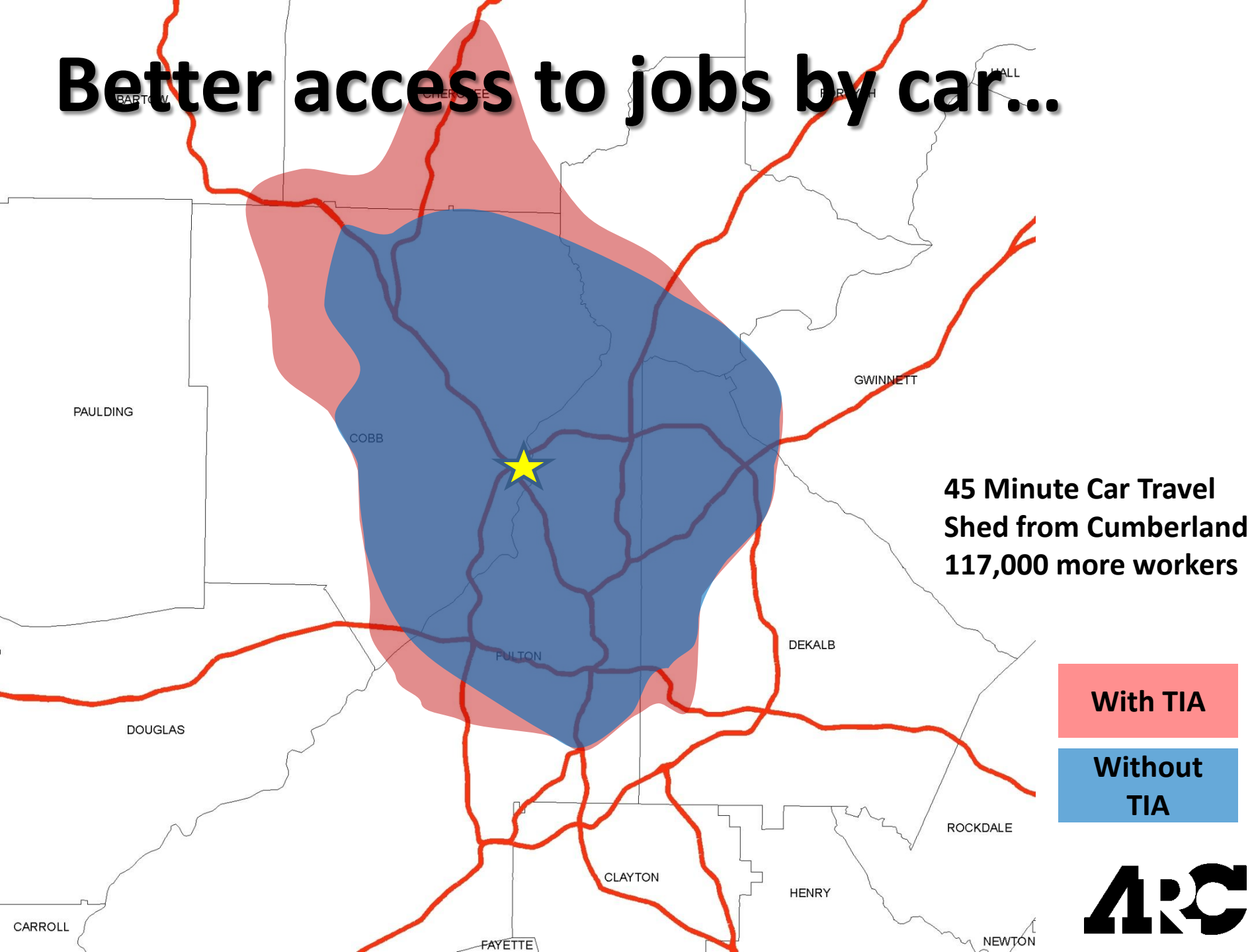


Making Business More Efficient

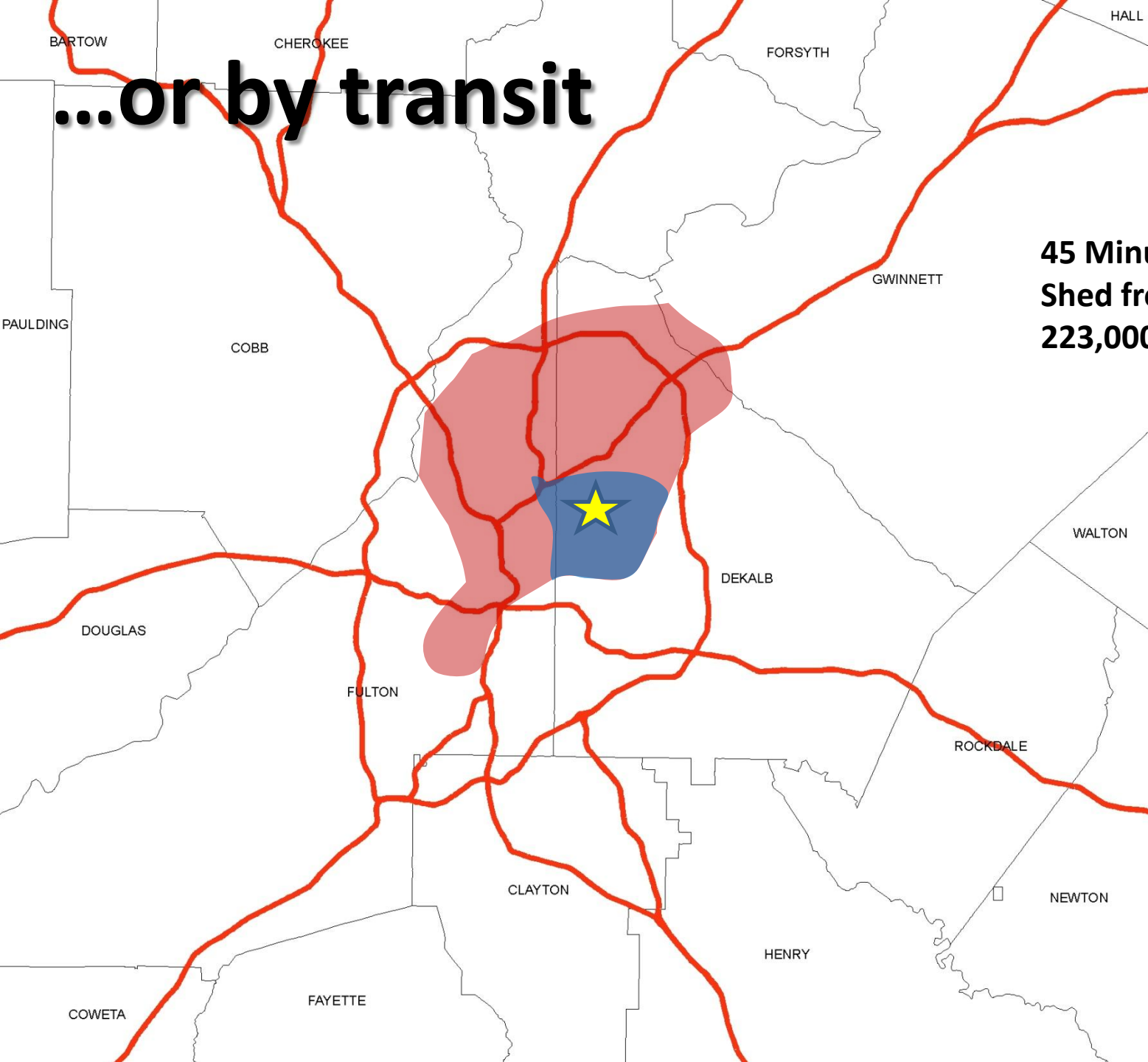
Relative Delivered Price by County



Better access to jobs by car...



...or by transit



**45 Minute Transit Travel
Shed from Emory/CDC
223,000 more workers**

With TIA

**Without
TIA**

Charlotte



Phoenix



Denver



Minneapolis



- No sales tax



- Additional services cuts
- Deferred maintenance
- Increased construction costs

REGIONAL TRANSPORTATION REFERENDUM JULY 31, 2012

www.atlantaregionalroundtable.com



Kathryn Lawler
404.463.3296
klawler@atlantaregional.com

