



The Economics of Longevity

Kathryn Lawler
 Executive Director
klawler1@gsu.edu
www.archicollaborative.org

Forbes
The 50 Most Innovative Companies Of 2014: Strong Innovators Are... [Active on LinkedIn](#)

REINVENTING AMERICA 10/30/2014 @ 3:34PM | 9,647 views

Aging America: The U.S. Cities Going Gray The Fastest

Continued from page 1

+ Comment Now + Follow Comments

In first place on our list is Atlanta, where the share of seniors in the population rose from 7.7% in 2000 to 10.4% in 2013, the biggest increase in the nation. In raw numbers, the over-65 population of the metro area rose to 572,534, an increase of 73.5% since 2000.

The percentage of the population in fast-growing Raleigh, N.C., that is over 65 grew from 8.0% to 10.2% in 2013, putting it in second place.

Our continuing coverage

Reinventing America

Presented By

ZURICH

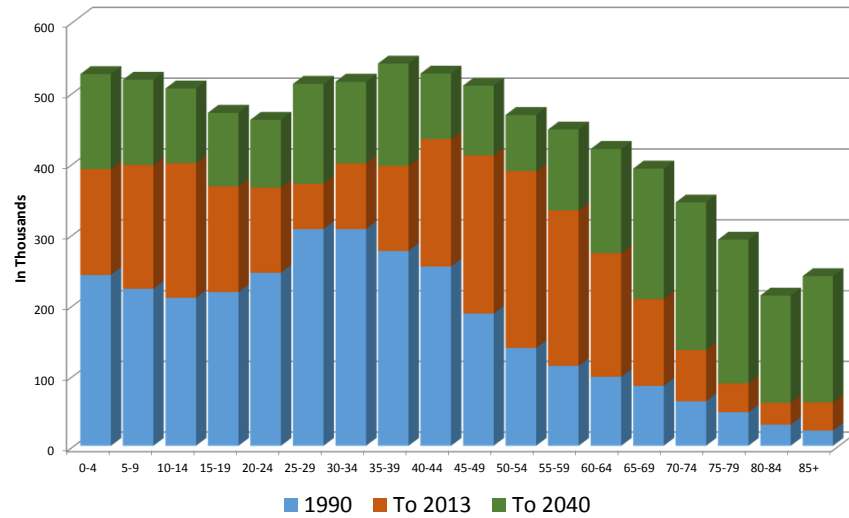
ZURICH INSUR.
FOR THOSE
TRULY
THEIR BUSI

Learn

Share

CONFERENCES AND MORE... have a reputation as a mouthful alone

Age Population Growth



Source: ARC Plan 2040 Transportation Update (2014) (20- County Area)

Baby Boomers savings, by percentages

Less than \$50,000	37%
Between \$50,000 and \$100,000	13%
Between \$100,000 and \$200,000	14%
Between \$200,000 and \$300,000	12%
Between \$300,000 and \$500,000	9%
Over \$500,000	15%

DATA SOURCE: PWC EMPLOYEE FINANCIAL WELLNESS SURVEY, 2016.

Cost of Chronic Disease



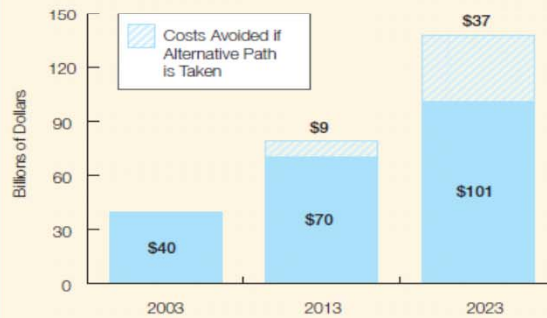
Economic Impact in Georgia 2003 (Annual Costs in Billions)

Treatment Expenditures:	\$7.1
Lost Productivity:	\$32.8
Total Costs:	\$39.9

MILKEN INSTITUTE

Figures may not sum due to rounding.

Projected Annual Economic Costs 2003-2023 (Billions) Georgia



Avoidable Costs in 2023 (Billions)

	Treatment Expenditures	Lost Productivity	Total
Current Path	\$22	\$115	\$138
Alternative Path	\$16	\$84	\$101
Costs Avoided	\$6 (27%)	\$31 (27%)	\$37 (27%)

The U.S. Is on the Verge of a Major Nursing Shortage - The Atlantic

The Atlantic

The U.S. Is Running Out of Nurses

The country has experienced nursing shortages for decades, but an aging population means the problem is about to get much worse.



A nurse checks on an infant in the neonatal intensive-care unit of the Holtz Children's Hospital in Miami.

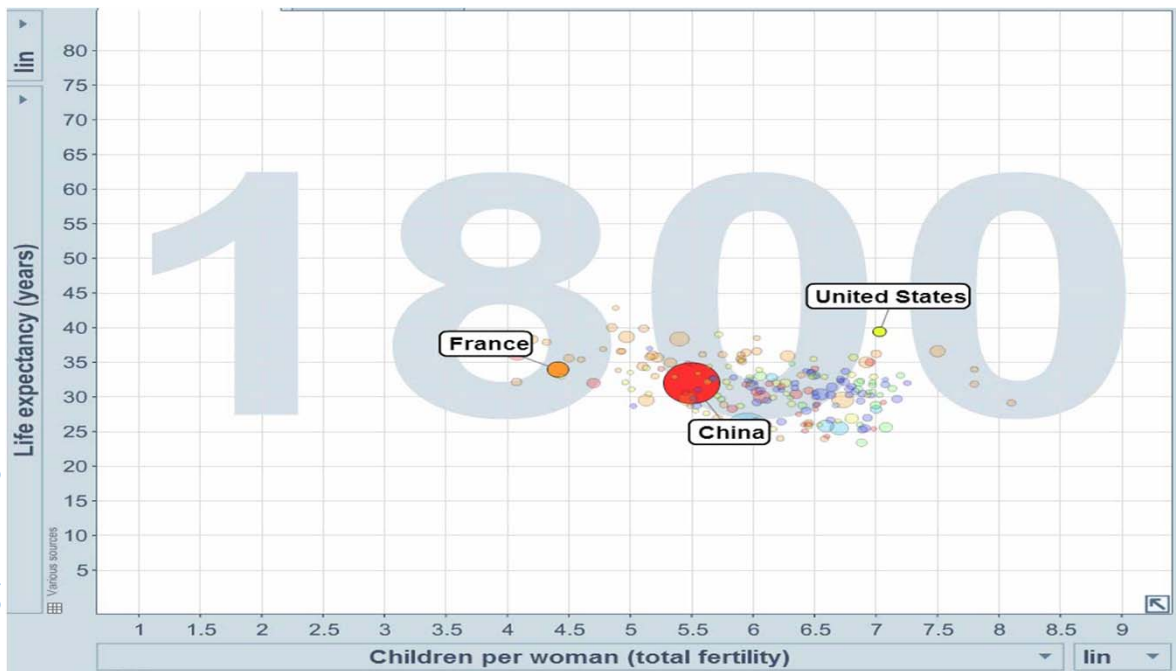
Joe Skipper / Reuters

REBECCA GRANT

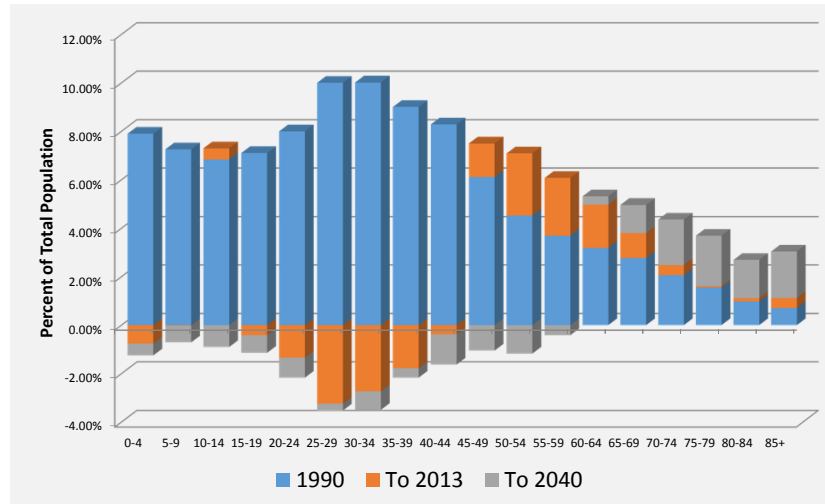
FEB 3, 2016 | HEALTH



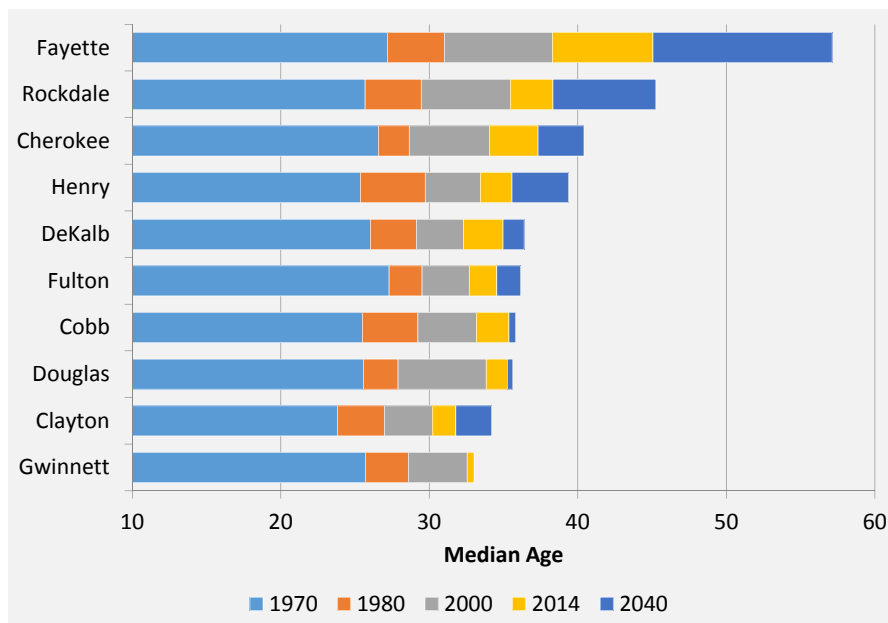
Longevity
www.gapminder.org



Age Composition Change



Source: ARC Plan 2040 Transportation Update (2014) (20- County Area)



Source: ARC Plan 2040 Transportation Update (2014) (20- County Area)

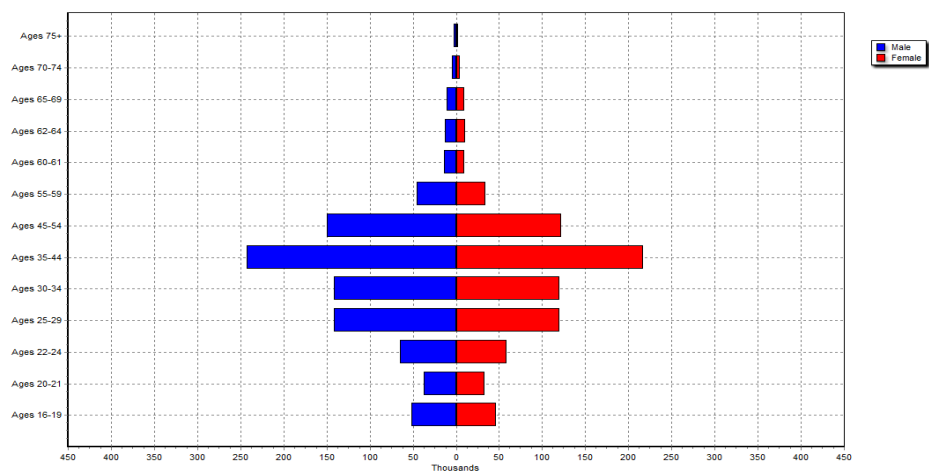
NEW ECONOMIC STRENGTH

1

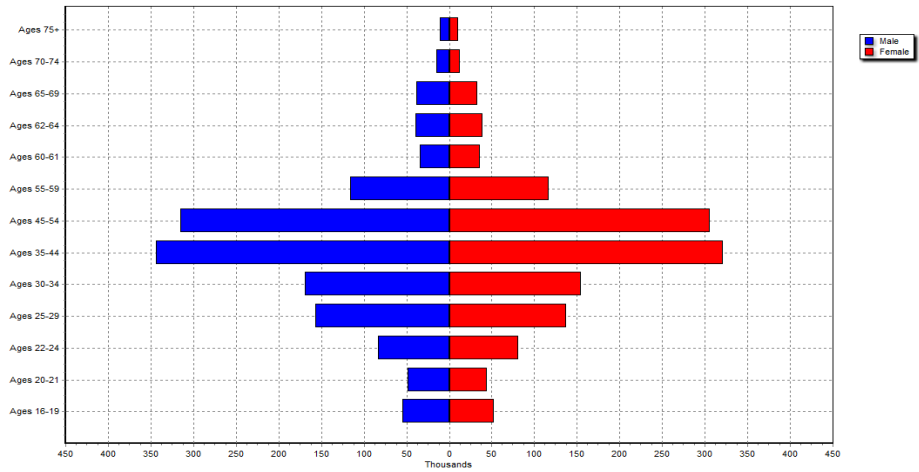
Billion in
65+ Wages

- In 2013 Q1, those aged 65+ held 3.7% of the jobs in the 10-county ARC area
- The average monthly wage is \$1,208 for those 65+, which does lag the overall average monthly wage for all others (18-64) in the workforce at \$1,400
- ...For some higher-paying industries, e.g. Professional Services, Mgmt. of Companies, average wages for 65+ are higher

1990 Atlanta Labor Force

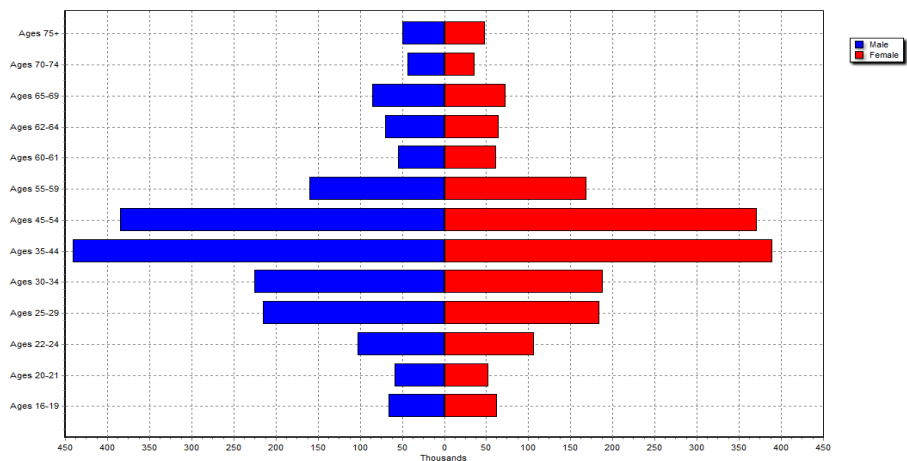


2013 Atlanta Labor Force



Source: ARC Plan 2040 Transportation Update (2014) (20- County Area)

2040 Atlanta Labor Force



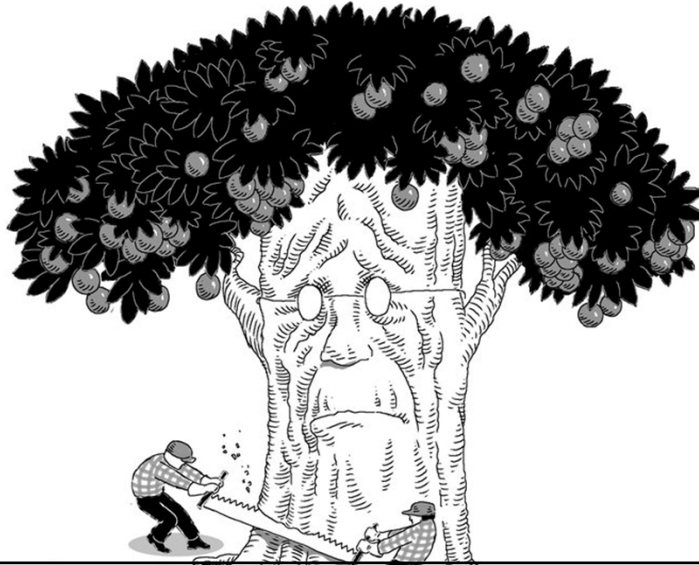
Source: ARC Plan 2040 Transportation Update (2014) (20- County Area)

The Opinion Pages | OP-ED CONTRIBUTORS

The New York Times

Let Older Americans Keep Working

By LAURENCE J. KOTLIKOFF and ROBERT C. POZEN AUG. 14, 2015



The New York Times

YOUR MONEY

As Workers Delay Retirement, Some Bosses Become More Flexible

AUG. 21, 2015



What if *more retirees* move to Metro Atlanta???

\$40Billion

PERSONAL INCOME

\$7.8Billion

IN ADDITIONAL GDP

17

Source: REMI

What if more *working age*₍₁₈₋₆₄₎ people move to Metro Atlanta?

\$4Billion

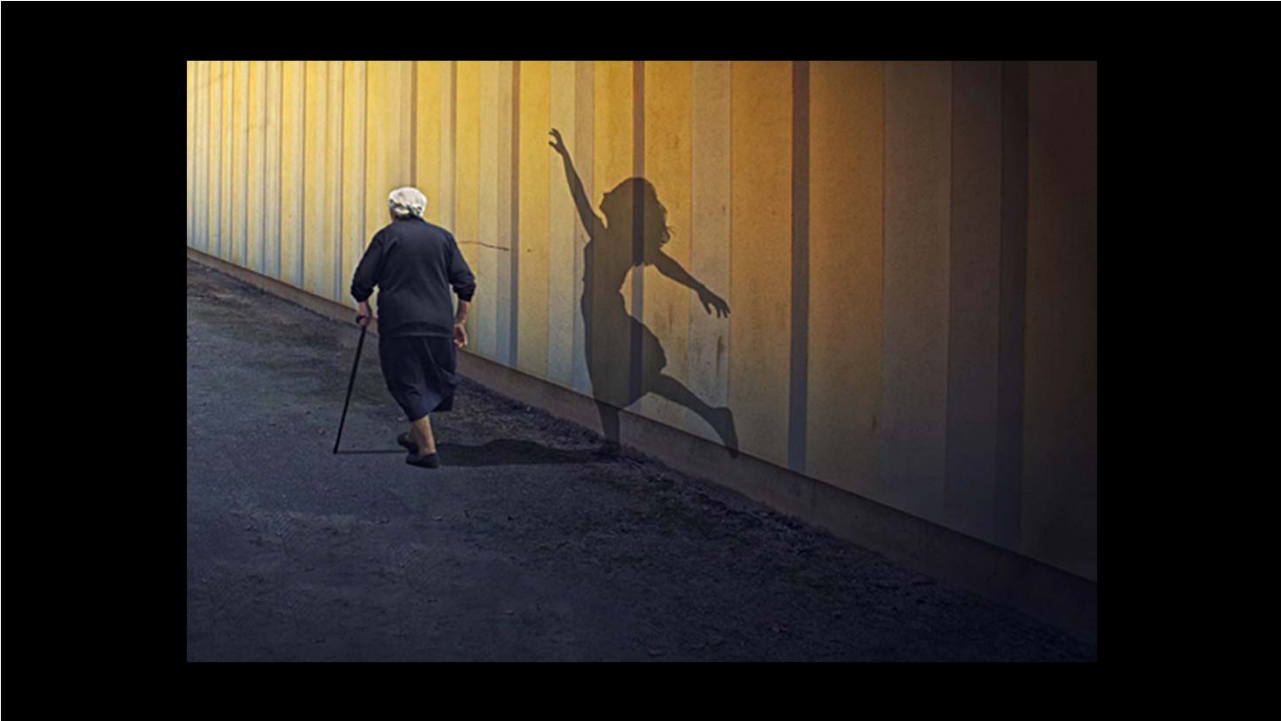
MORE IN PERSONAL INCOME

\$2.6Billion

IN ADDITIONAL GDP

18

Source: REMI (ARC Analysis)





FRAMEWORKS INSTITUTE

“Individuals are exclusively responsible for how they age”

Aging, Agency, and Attribution of Responsibility:
Shifting Public Discourse about Older Adults

Moira O’Neil
Abigail Haydon

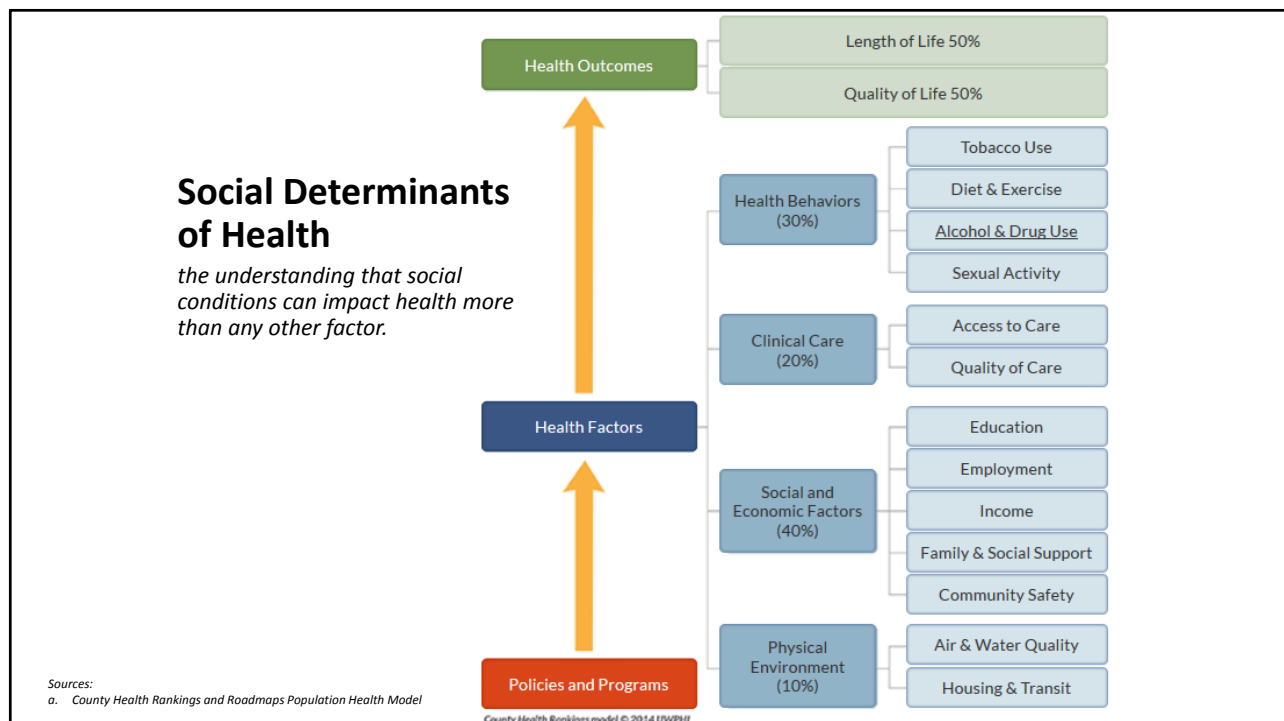
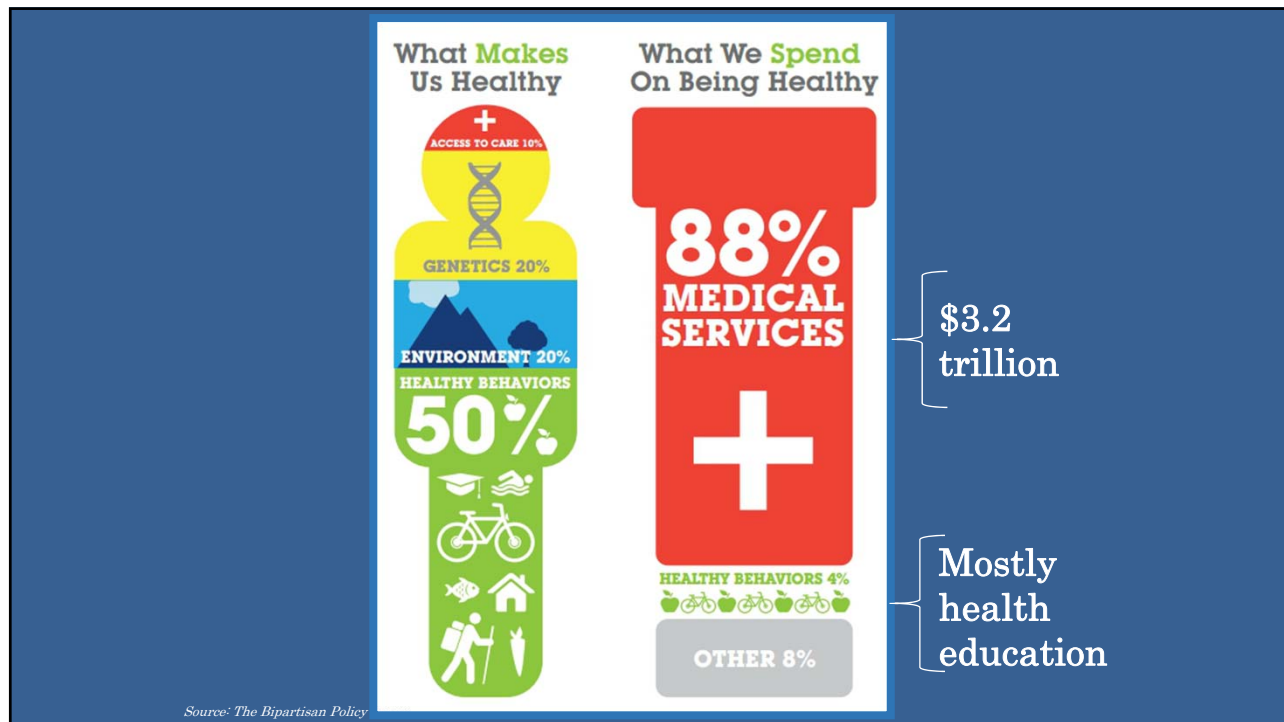


FRAMEWORKS INSTITUTE

- Throwaway Generation
- Vibrant Senior
- Aging Workers
- Demographic Crisis
- Government Actions

Aging, Agency, and Attribution of Responsibility:
Shifting Public Discourse about Older Adults

Moira O’Neil
Abigail Haydon



Value Proposition:

Aging Population Solves Community Challenges

Aging in Community = Diversified Tax Base

Transportation options = Lower transit costs

Diverse Age Structure = Maximized Infrastructure



The Value Proposition of Age-Friendly Communities



Summit Report
September, 2015

Capture and Reinvest



ARCHI | Atlanta Regional Collaborative for Health Improvement
Joining Forces to Improve Health Outcomes in Metro Atlanta

Kathryn Lawler
 Executive Director
klawler1@gsu.edu
www.archicollaborative.org